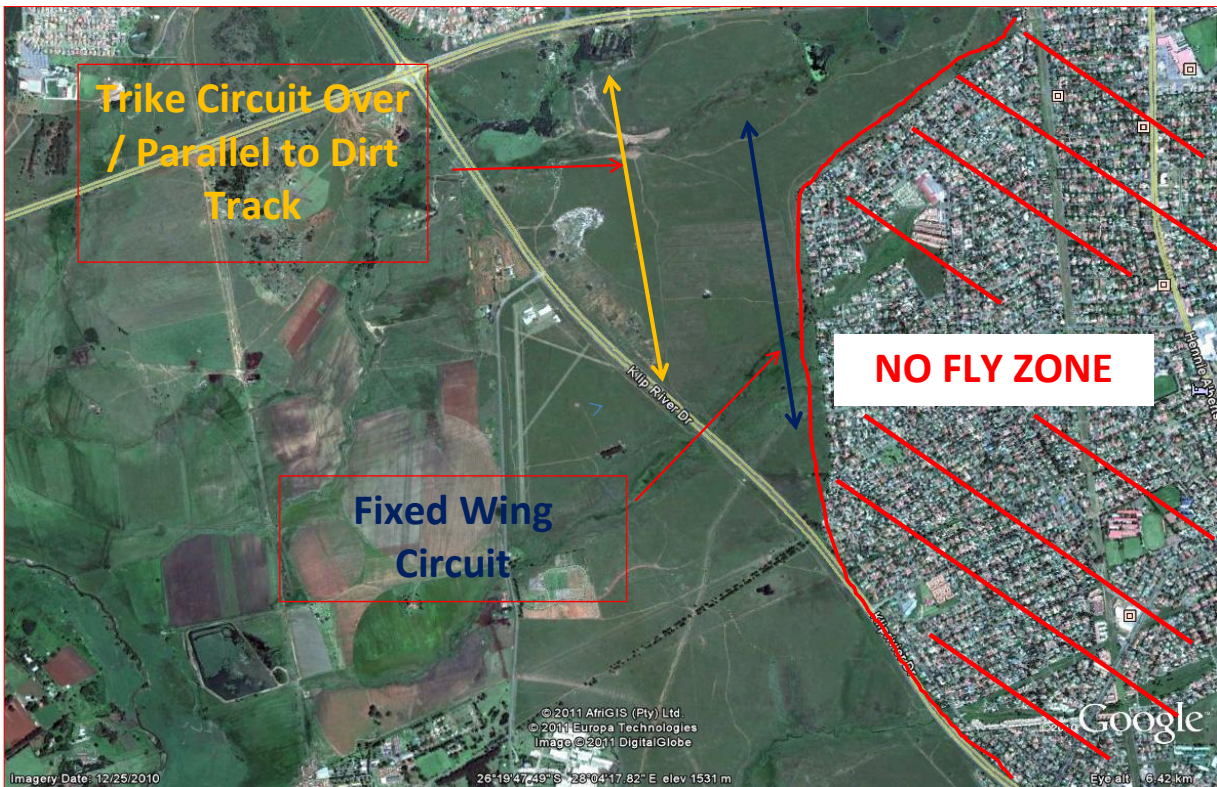




S26° 19' 40.0" E02S° 04' 00.0"

**No Fly Zone @ Panorama Airfield**



**GUIDELINES OF THE AIRFIELD**

- Circuits to the east of Panorama as follows ( When Circuits are Flown to the east)
  - Trikes to have a shorter circuit than Fixed wings (Over Dirt track in Field east of the Panorama )
  - Fixed Wing to fly larger circuit than trikes BUT do NOT overfly BUILT UP area (Brakendowns)
- The area shaded in RED to be avoided
- TRIKES MUST BE AT CIRCUIT HEIGHT ON DOWN WIND **5550 FT**
- FIXED WINGS MUST BE AT CIRCUIT HIGHT ON DOWN WIND **5850 FT**